

(Mask Option 2) Face Mask Pattern N95 Cover

Most Important Step: Wash hands with warm soapy water for at least 20 seconds prior to working with materials. Ensure working space has been thoroughly cleaned.

Materials:

- Two 8 in. x 13 in. pieces of fabric (any color, just need 2 pieces as the masks are 2 ply)
- 17-inch piece of $\frac{1}{4}$ inch elastic (cut into two 8.5 inch pieces)

Steps:

Cut material using Medium or Large pattern below

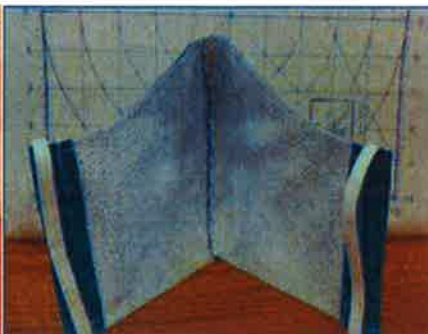
1. Fold material in half, right sides together.
2. Stitch center, curved, seam together using a $\frac{1}{4}$ in. seam.
3. Clip and top stitch seam to one side.
4. Stitch around entire mask (top, bottom and sides).
5. Fold over $\frac{3}{4}$ in. at each side and stitch creating a casing for the elastic (or alternatively, use cotton fabric ties that are 36 in. long - see picture below).
6. Place cut elastic 8 in. in length through each side of the casing.
7. Stitch elastic closed, creating a loop.

Helpful Tip: An iron set on low/med (Silk) can be used if needed to press center seam. Avoid puncturing the material with pins to preserve the integrity of the fabric.

Elastic Bands Front

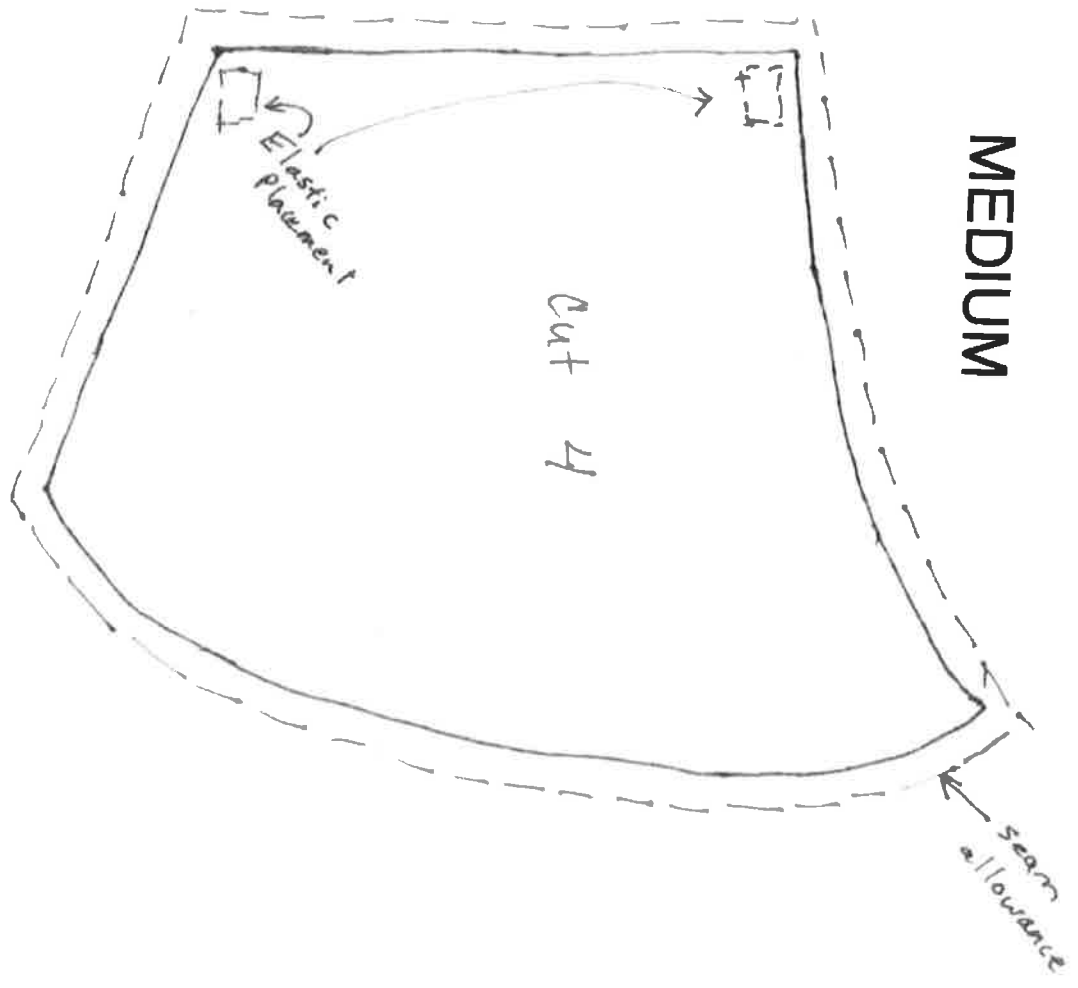


Back

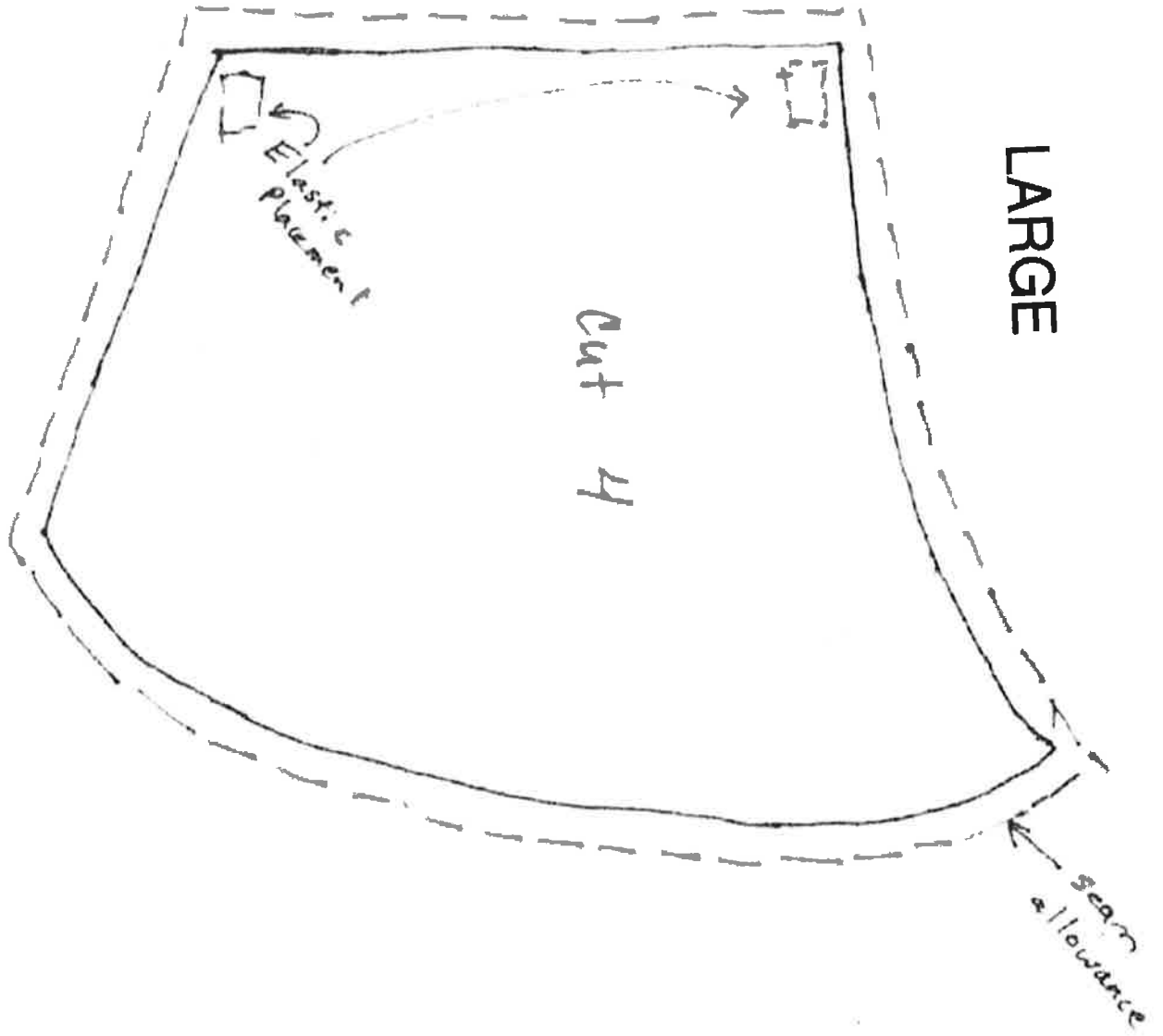


Example with Cotton Ties (36 in.)





MEDIUM



LARGE

Cut 4

Elastic placement

seam allowance